

Annual General Meeting

Whakatāne District Grey Power Association Inc.

Victor Luca



Wednesday 18-May-22

Agenda



Health & Safety

1. Welcome and apologies - *Mover, Secnder*

Lynette Jones, Susan Keys

2. Correspondence In & Out - *Mover, Secnder*

3. Minutes of previous AGM held May 2021

Matters arising from these Minutes (if any)

Mover, Secnder

4. Treasurer's Report – June Goodhew

- Financial Report (Treasurer – June Goodhew) - *Mover, Secnder*

- Membership & subscriptions review (Siva Panadam)

4. Defibrillator demonstration

5. President's Report – Victor Luca

Title: Who are we, what have we done and where are we going?

Discussion.

6. Nominations & Election of Committee Members

President, Secretary, Treasurer, Committee members.

7. General Business

8. Morning Tea

Scrutinizers: Sandy Milne & Carolyn Jacobs.

Wednesday 18-May-22

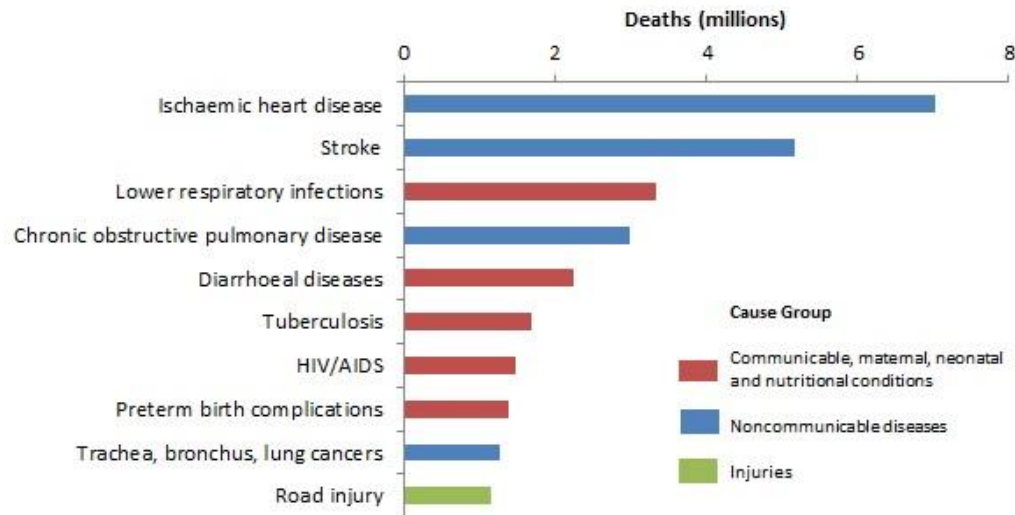
Treasurer's Report – June Goodhew

| Whakatane District Grey Power Association Incorporated | | | | | | | | | |
|--|------------------|--------------------|--------------------|--|---------------------------|--------------------|--------------------|--|--|
| Statement of Financial Performance for Period 1 April 2021 - 31 March 2022 | | | | | | | | | |
| Brought forward from 31 March 2021 | | | | | | | | | |
| Account | 3890030986339-00 | | 4,702.91 | | | | | | |
| Account | 3890030986339-02 | | 1,176.83 | | | | | | |
| Term Deposit | 3890030986339-01 | | 10,639.72 | | | | | | |
| | | | 16,519.46 | | | | | | |
| | | | | | | | | | |
| <u>Income</u> | | <u>2022</u> | <u>2021</u> | | <u>Expenditure</u> | <u>2022</u> | <u>2021</u> | | |
| Subscriptions | | 5,220.00 | 3,673.00 | | Administration | 2,357.04 | 1,839.05 | | |
| Donations | | 283.48 | 231.00 | | Capitation Fees | 1,880.00 | 1,217.00 | | |
| Bank Interest | | 22.00 | 282.83 | | Meeting Exp | 250.00 | 166.94 | | |
| TD interest | | 736.00 | 0 | | Fed AGM exp | 2,474.40 | - | | |
| Federation AGM grant | | 400.00 | 0 | | Bank Fees | 22.00 | 16.00 | | |
| | | 6,661.48 | 4,186.83 | | Postage | 215.00 | - | | |
| | | | | | | 7,198.44 | 3,238.99 | | |
| Assets - Current Balances 31 March 2022 | | | | | | | | | |
| Account | 3890030986339-00 | | 5,687.26 | | | | | | |
| Account | 3890030986339-02 | | 4,294.38 | | | | | | |
| Term Deposit | 3890030986339-01 | | 6,000.00 | | | | | | |
| (20 Dec - 20 June 22 @ 1.5%) | | | | | | | | | |
| | | | 15,981.64 | | | | | | |
| 31-Mar-22 | | | | | | | | | |
| Petty Cash | \$201.90 | | | | | | | | |
| | | | | | | | | | |
| Liabilities | | | | | | | | | |
| Defibrillator | 2,395.00 | | | | | | | | |

Whakatane & Districts Grey Power
Association Inc.
31 March 2022
Balance Sheet presented by June Goodhew

Defibrillator Demonstration

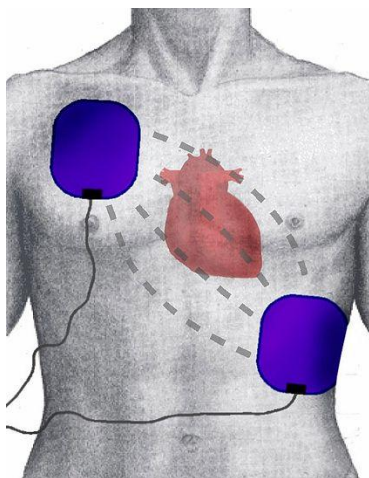
Top 10 global causes of deaths, 2000



Source: Global Health Estimates 2016: Deaths by Cause, Age, Sex, by Country and by Region, 2000-2016, Geneva, World Health Organization; 2018.

Defibrillation is a treatment for life-threatening [cardiac dysrhythmias](#), specifically [ventricular fibrillation](#) (VF) and [non-perfusing ventricular tachycardia](#) (VT)

[How to Use a Defibrillator \(AED\) - First Aid Training - St John Ambulance](#)



The Committee

Victor Luca

Judy Flemming

Ann Kebell



Siva Panadam



Gaye Murphy



Maud McKinnon



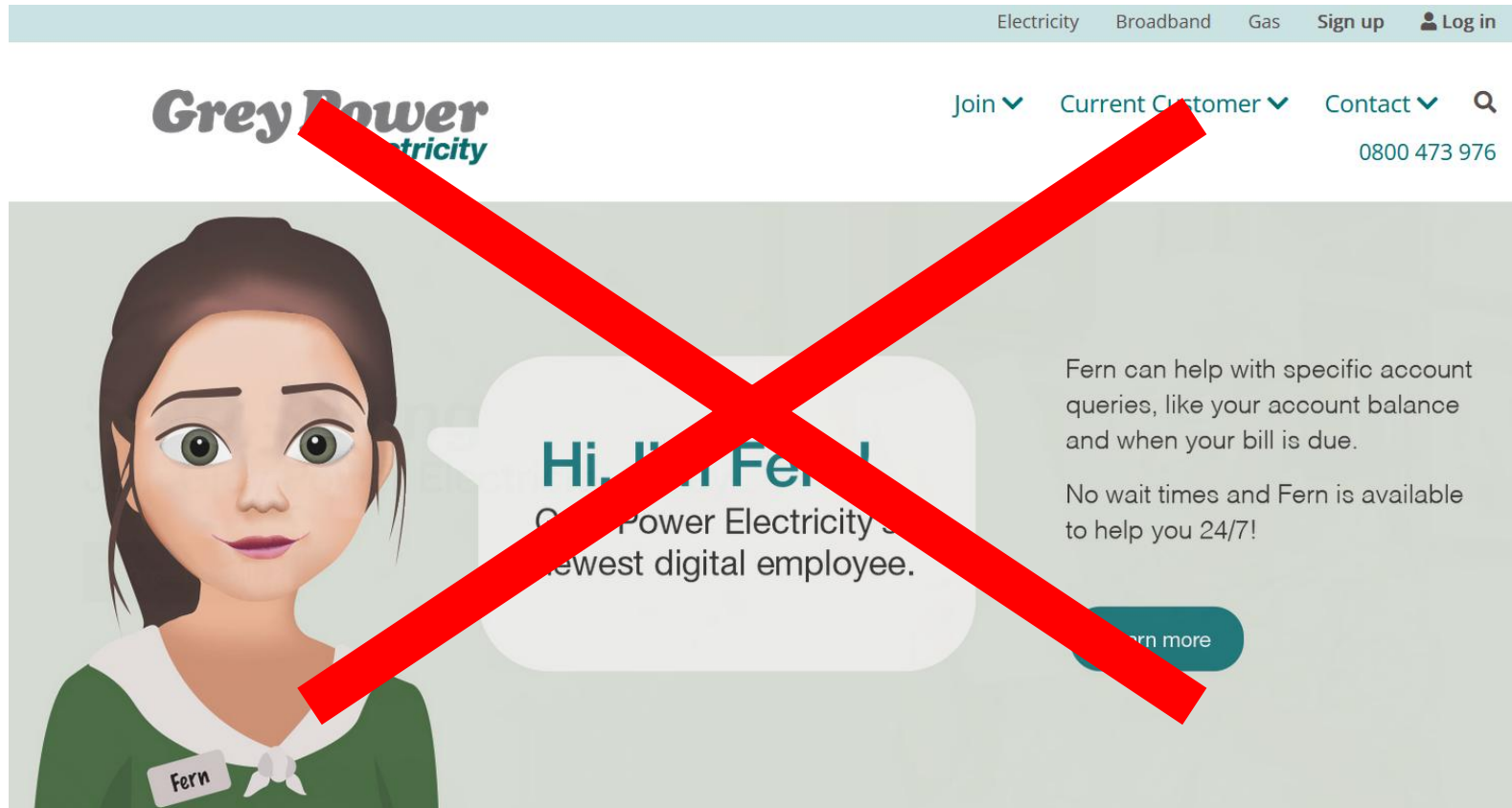
June Goodhew



Raewyn Kingsley-Smith



Why Join Grey Power?



Grey Power Electricity

What is Grey Power?



Grey Power is an advocacy organisation promoting the welfare and well-being of all those citizens in the 50 plus age group. We monitor what the government is doing and how that will affect our members – meeting with influential people including politicians, to make our views known.

Grey Power is dedicated to the welfare, interests and concerns of the many people who are over 50 years and is a neutral but assertive voice of influence in the political arena with no party political affiliation.

Grey Power Aims and Objectives

1. To advance, support and protect the welfare and well being of older people.
2. To affirm and protect that statutory right of every New Zealand resident, to a sufficient New Zealand Superannuation entitlement.
3. To strive for a provision of quality Health Care to all New Zealand residents regardless of income and location.
4. To oppose all discriminatory and disadvantageous legislation affecting rights, security and dignity.
5. To be non-aligned with any political party, and to present a strong united lobby to all Parliament and statutory Bodies on matters affecting New Zealanders.
6. To promote and establish links with kindred organizations.
7. To promote recognition of the wide-ranging services provided by senior citizens of New Zealand.
8. To gain recognition as an appropriate voice for all older New Zealanders.

Aims of the Modernisation Plan AGM 2012

To be implemented on a 3-5 year time horizon

- Define and implement the roles and responsibilities of the Associations, Federation Board and Zone Representatives.
- Use appropriate technology to develop communications protocols that are the envy of all non-profit organisations.
- Achieve a membership of 100,000 within 5 years. ← Means to an end
- Advanced, support and protect the welfare and well-being of all persons in New Zealand but with particular emphasis on older persons through advocacy.
- Utilise the expertise of members and external organisations to provide a research resource for all activities of Grey Power.
- Develop a sustainable financial model that ensures the viability of the associations and federation and to update the constitution.

Grey Power New Zealand Modernisation Working Party

Purpose of Grey Power

Grey Power, an apolitical organisation, will use positive advocacy to enhance and protect the sustainable wellbeing of NZ Residents

Our Dream

For GREY POWER to be regarded as the UNIFIED voice of New Zealand's OLDER (50+) generation

Our Essence

Universal Commitment and Concern for the future of New Zealand's older generation.

GBI's (Great Big Ideas)

- Recognition of Older Generation volunteers
 - Nat Super up to 12.5% of weekly wage
 - Change to the Rating system
- Attention with National Seniors Australia
 - Ownership of Retirement Villages
- Grey Power Power Company (50+ Power)
 - Grey Power Bank/ Insurance
- Agreement from Government that Minister for Senior Citizens will be in Top 10 & in Cabinet

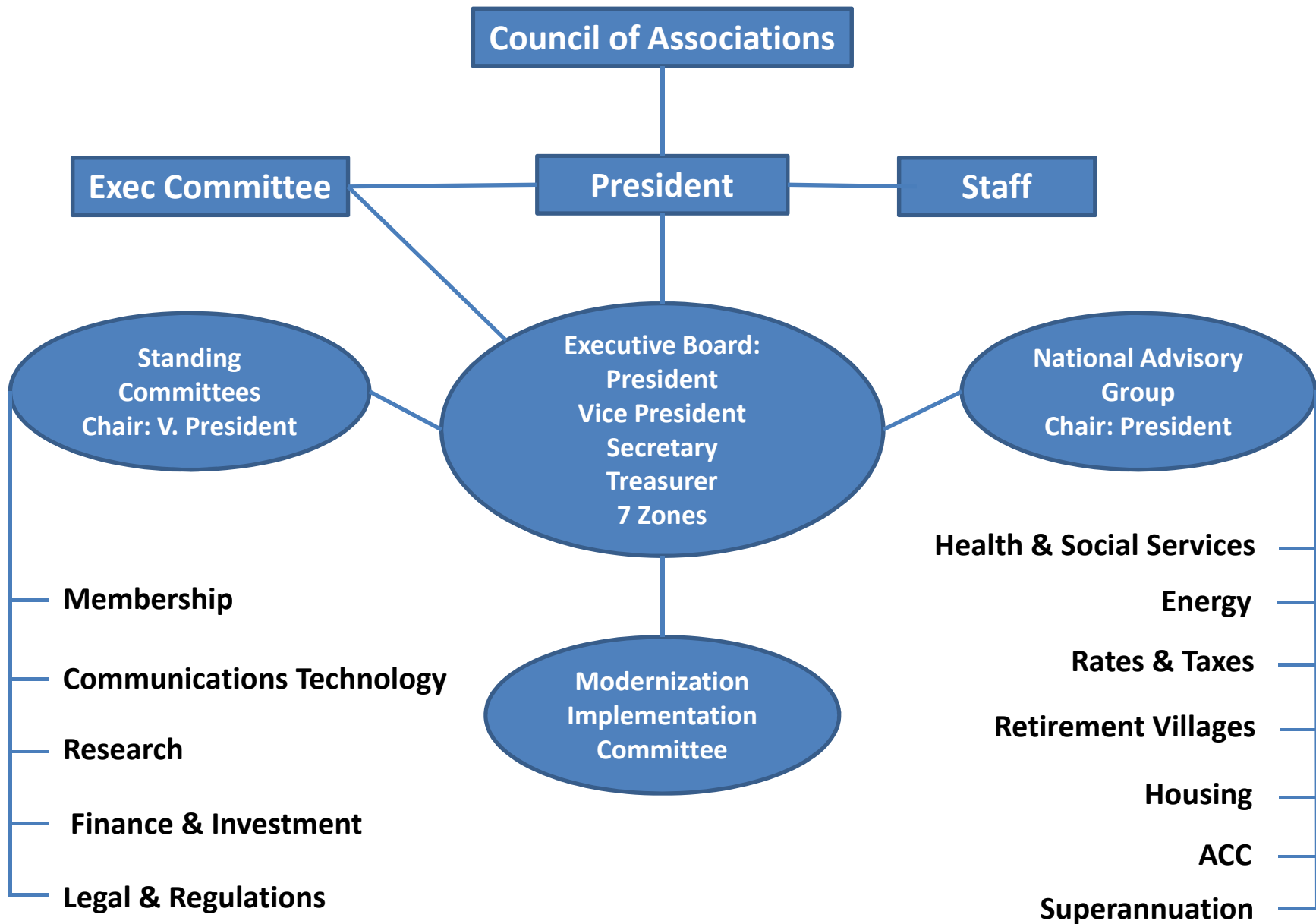
Hooks to Attract New Members

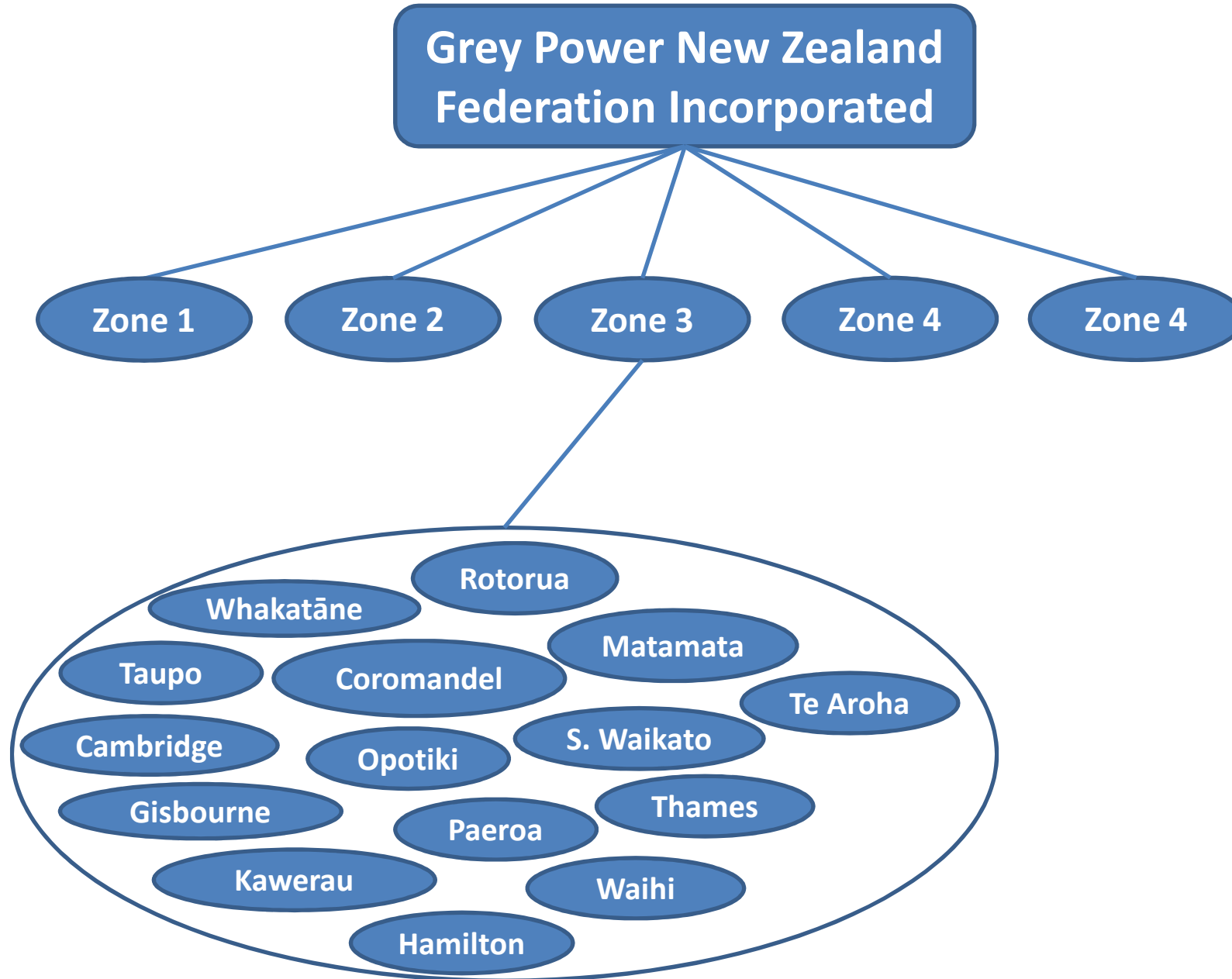
- Rates Equity and Relief
 - Energy Savings
- Lead Debate and ACTION on topical issues – SOE's; Foreshore and Sea bed

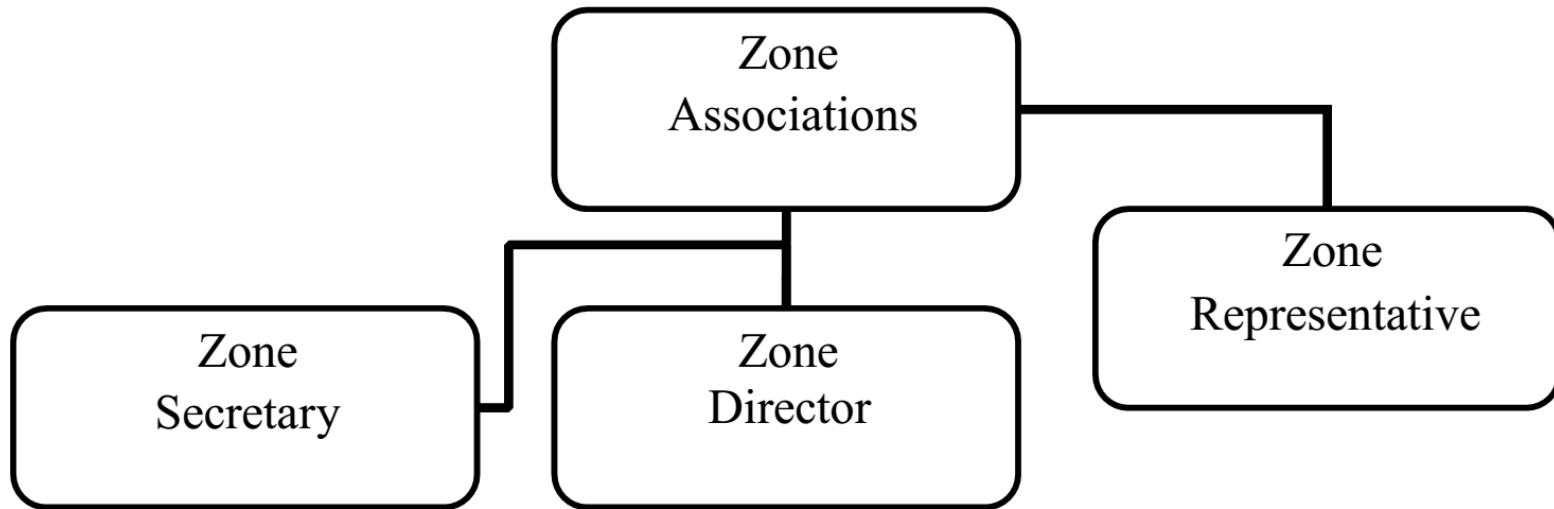
The 74 associations of the federation



| Grey Power Association | |
|--|--|
| Ashburton | North Canterbury |
| Auckland | North Otago |
| Buller | North Shore |
| Cambridge | Opotiki |
| Central Hawkes Bay | Otago |
| Central Otago | Otamatea |
| Christchurch | Paeroa |
| Coromandel | Papamoa & Districts |
| Counties Manukau | Queenstown |
| Dannevirke & Districts | Rangitikei |
| Eastern Southland | Rotorua |
| Far North | South Otago |
| Gisborne | South Taranaki |
| Golden Bay | South Waikato |
| Greymouth | Southland |
| Hamilton | Stratford |
| Hastings & Districts | Taupo |
| Hibiscus Coast | Tauranga & Western BOP |
| Hokitika | Te Aroha |
| Horowhenua | Te Awamutu |
| Howick/Pakuranga | Temuka |
| Hutt City | Thames |
| Kaipara | Timaru |
| Kapiti Coast | Upper Hutt |
| Kawerau | Waiheke Island |
| King Country | Waihi |
| Mana-Tawa | Waimate |
| Manawatu | Wainuiomata |
| Marlborough | Wairoa & District |
| Matamata | Waitakere |
| Mercury Bay (Whitianga) | Wanganui |
| Mid North | Warkworth |
| Morrinsville | Wellington Central |
| Motueka | Wellington South East |
| Napier & Districts | Whakatane |
| Nelson | Whangamata |
| New Plymouth | Whangarei |







Power in Numbers: Zone 3 Associations by the numbers

| | | Financial | | UnFinancial | | Deleted | | % |
|----|------------------------|------------|---------|-------------|---------|------------|---------|------|
| | | Households | Members | Households | Members | Households | Members | |
| 1 | Cambridge | 204 | 251 | 60 | 82 | 3 | 4 | 1.22 |
| 2 | Coromandel | 95 | 136 | 86 | 121 | 1 | 1 | 7.73 |
| 3 | Gisborne | 62 | 77 | 145 | 189 | 0 | 0 | 0.21 |
| 4 | Hamilton | 524 | 704 | 344 | 453 | 8 | 10 | 0.43 |
| 5 | Kawerau & Districts | 145 | 199 | 115 | 147 | 0 | 0 | 2.66 |
| 6 | King Country | 82 | 115 | 172 | 230 | 1 | 1 | 0.44 |
| 7 | Matamata | 311 | 430 | 112 | 150 | 3 | 4 | 5.51 |
| 8 | Mercury Bay | 56 | 88 | 181 | 261 | 1 | 1 | 7.19 |
| 9 | Morrinsville | 4 | 5 | 101 | 139 | 0 | 0 | 0.06 |
| 10 | Opotiki | 24 | 28 | 52 | 63 | 0 | 0 | 0.29 |
| 11 | Paeroa | 54 | 64 | 69 | 80 | 0 | 0 | 1.05 |
| 12 | Papamoa and Districts | 30 | 38 | 55 | 71 | 0 | 0 | 0.15 |
| 13 | Rotorua | 866 | 1174 | 436 | 574 | 11 | 14 | 1.52 |
| 14 | South Waikato | 84 | 101 | 189 | 217 | 0 | 0 | 0.40 |
| 15 | Taupo | 214 | 297 | 178 | 249 | 1 | 1 | 1.14 |
| 20 | Tauranga & Western BOP | 309 | 397 | 593 | 797 | 3 | 4 | 0.30 |
| 16 | Te Aroha | 50 | 59 | 143 | 190 | 0 | 0 | 1.30 |
| 17 | Te Awamutu | 66 | 98 | 103 | 152 | 0 | 0 | 0.75 |
| 18 | Thames | 76 | 106 | 81 | 115 | 1 | 1 | 1.38 |
| 19 | Waihi | 201 | 264 | 139 | 175 | 0 | 0 | 3.50 |
| 21 | Whakatane District | 148 | 202 | 108 | 137 | 3 | 5 | 0.54 |
| 22 | Whangamata | 205 | 288 | 117 | 162 | 2 | 2 | 7.09 |

Total (financial + unfinancial members) 51,415

Grey Power Achievements

1. Removal of the Surtax
2. Asset Testing Legislation being Phased Out
3. Lower doctors' Fees
4. Lower Pharmacy Fees
5. Removal Over 80's Driving Tests
6. Removal Simulated Driving Tests by Occupational Therapists
7. Lower Tariff Electricity
8. Superannuation Increased to 66% NATOTWW (net after tax ordinary time weekly wage)
9. Rate Rebate Scheme revitalised and more recently extended to include retirement village residents
10. Independent Superannuation & Income Centres
11. Improved Regulations for Rest Homes
12. Code of Practice for Rest Homes
13. Abolition of Interest on Student Loans
14. The National Superannuation Adjustment for the Tax Cuts in the 2008 Budget is a long awaited recognition by a major political party of the plight of the elderly reliant on NZ Superannuation
15. Hearing aid subsidy increased
16. Rates Rebate Scheme indexed to CPI. Amount now \$580 (originally \$500) and threshold now \$23,240 (from 20,000 originally)
17. Spot Audits for Rest Homes
18. Retention of Graduating Doctors – (Student Loan)
19. Lowering Electricity Increase for ETS
20. Retention of SuperGold Card Off-Peak Travel
21. Retention of SuperGold Card Waiheke Island Ferry Travel
22. Increased funding for Glaucoma operations
23. Annual clothing allowance for grandparents raising grandchildren (In conjunction with Grandparents raising Grandchildren)
24. Winter Energy Payment
25. Security doors on most Council owned pensioner flats

What do we do?



We advocate (lobby) on behalf of our members.

Lobbying - any attempt by individuals or private interest groups to influence the decisions of government.

1. Health ← Remit to national AGM
2. Cost of living ← Work in progress (rates payers association)
3. Transportation ← Supporting EBV
4. Banking
5. Climate change (environment, energy)
6. Water and land resources (Spatial planning)
7. Flooding
8. ...
9. ..

Our Remit

Halt to Further Privatization of Health

That Grey Power lobby to halt the ongoing privatization of our Health System without a sound economic business case for each proposed implementation and corresponding solid evidence of improvements to the health outcomes for New Zealanders.

Explanation

Our present health system is undeniably a two-tier system giving preferential access and superior treatment to those that can most afford it and evidence suggests that it is becoming increasingly privatized [1,2].

- Today, about 35% of New Zealanders have private health insurance [2] enabling the insured to get prompt and premium treatment while the remainder get the waiting list. Many Grey Power members cannot afford private insurance.
- It is well known that the public system subsidizes the private system [3].
- The level of privatization of the system over time is increasing by stealth suggesting that the *for-profit* motive is becoming more entrenched.
- Our primary healthcare providers, General Practitioners, effectively operate private businesses. Many folk struggle to pay the consultation costs.
- Pathology services are almost completely privatized (a virtual monopoly) and other specialist services such as dentistry, radiology, cardiology and urology are either already either partially or fully privatized.
- Your ability to get healthcare in our supposed public universal system depends on your position on the socio-economic ladder irrespective race, culture, color, religion *etc.*
- Health authorities can show no proof that privatization has led to economic efficiencies or improvements in health outcomes.

If we continue down the present path of increasing privatization, there is a danger that we will end up with a health system that resembles that of the United States which has the highest costs by far of any in the OECD country and the worst outcomes by far [4]. The appalling response of the fully privatized US health system to the COVID pandemic is strong evidence of the failure of fully privatized systems.

The belief that private is better and the market will deliver must be dispelled if better outcomes for Grey Power members and their descendants are to be achieved.



whakagreypower  · Nov 12, 2021 · 14 min read



Your Health and the Health System

Updated: Nov 13, 2021

Dr/Prof. Victor Luca

12-Nov-21



New Zealand's Health System Under the Microscope

Victor Luca

Scientist/District Councilor



4-Mar-22, Grey Power, Zone 3 Meeting

Level of Privatization of Specialist Services?



Pathology

70% Private



Radiology

(Diagnostic imaging)

40% Private



Ophthalmology



Urology



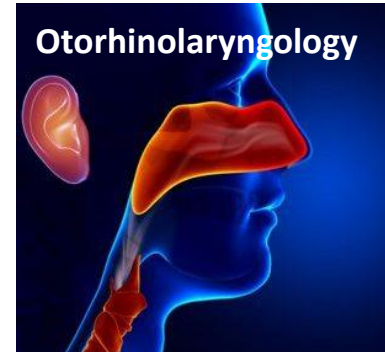
Dermatology



Cardiology



Neurology



Otorhinolaryngology



Radiation oncology



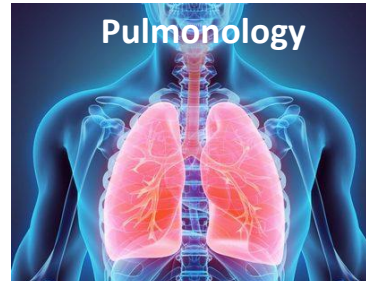
Hematology



Dentistry



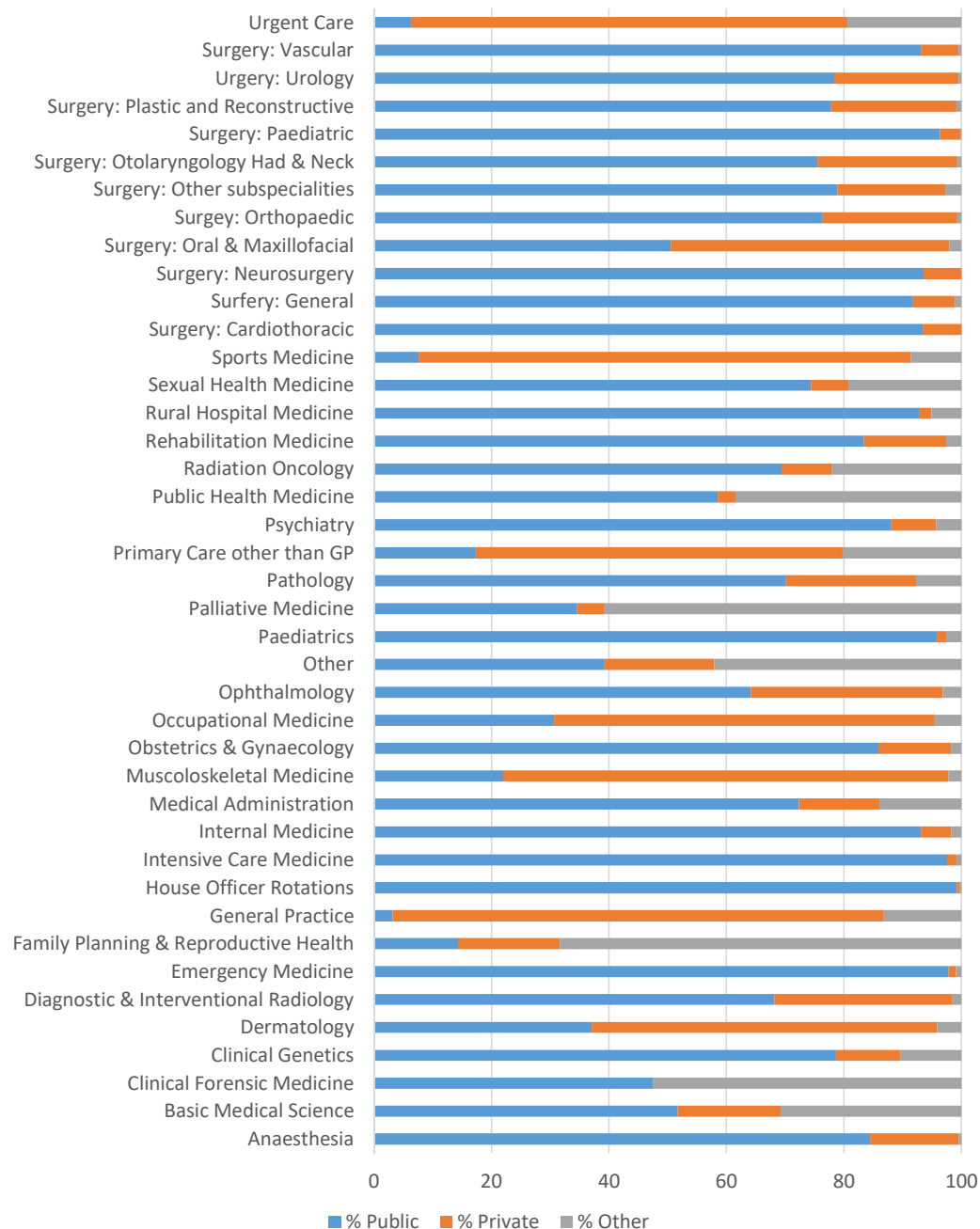
Medical oncology



Pulmonology



Gastroenterology



17-May-22

Kia ora Dr Luca

Thank you for your Official Information Act request of 15 April 2022 seeking further information about the medical health workforce by employer type, following your earlier request [H202204793].

The Ministry has decided under section 15(a) of the Act to grant your request, however, due to COVID-19 cases and the volume of requests the organisation has received, it requires further time to administratively process your request. The Ministry anticipates the information requested will be provided to you no later than 24 May 2022.

On behalf of the Ministry, I want to apologise for this delay. You have the right, under section 28 of the Act, to ask the Ombudsman to review any decisions made in response to your request.

Ngā mihi

Antony Paltridge
Principal Adviser
OIA Services Team

What is Money?



Cowry shell money, [*Cypraea moneta*](#)



[Electrum Carthaginian](#) shekel, c.a. 310–290 BC

Song Dynasty – first paper money
970-1279AD



Communications

Influencing requires an effective communications strategy

Ours remains a work in progress and we need to adapt to new media if we are to be effective

<https://www.yumpu.com/en/browse>

GreyPower MAGAZINE

A lifestyle quarterly and official publication of Grey Power www.greypower.co.nz ISSUE 70 SEPTEMBER 2019

Double dipping anomalies

Grey Power Federation executive secretary and Advocacy Committee co-chair JAN PENTECOST reports on the long running battle to address those unfair anomalies.

While the Federated Pensioners' Association (FPA) has been successful in its campaign to secure a 10% increase in the State Pension, it has also been successful in securing a 10% increase in the State Pension. This is a double dipping anomaly, as the State Pension is already indexed to inflation. The FPA has also been successful in securing a 10% increase in the State Pension, which is a double dipping anomaly, as the State Pension is already indexed to inflation. The FPA has also been successful in securing a 10% increase in the State Pension, which is a double dipping anomaly, as the State Pension is already indexed to inflation.

I was not surprised to read about the double dipping anomaly. It is a well-known fact that the State Pension is indexed to inflation. The FPA has also been successful in securing a 10% increase in the State Pension, which is a double dipping anomaly, as the State Pension is already indexed to inflation. The FPA has also been successful in securing a 10% increase in the State Pension, which is a double dipping anomaly, as the State Pension is already indexed to inflation.

Flower power special - See page 38

Arvida

The attitude of Living Well is transforming the ageing experience.

Arvida

The attitude of living well.

GreyPower MAGAZINE

A lifestyle quarterly and official publication of Grey Power www.greypower.co.nz ISSUE 45 MARCH 2021

Masters Games triumph

The New Zealand Masters Games - which alternate between Dunedin and Whangarei - successfully rounded up their North Island session in February.

As the Whangarei Masters Games (WMA) came to a close, the organisers were proud to announce that the Games had been a success. The WMA was held in Whangarei, New Zealand, and was the largest Masters Games event in the world. The Games featured a wide range of sports, including athletics, swimming, and cycling. The organisers were proud to have a record number of participants, and the event was a great success for the community.



I FEEL RATHER SPOILT...

Find the attention, care and support to truly live well. That's how to your centre is waiting.

Call us today on 0800 278 432 or visit arvida.co.nz

Living a life with soul

Arvida

GreyPower MAGAZINE

A lifestyle quarterly and official publication of Grey Power www.greypower.co.nz ISSUE 46 JUNE 2021

The digital exclusion of older people



There is no doubt that we are working closely with the Bankers Association to find solutions for the digitally disadvantaged. But the stories in this issue reflect what I hear on my phone very frequently.

JAN PENTECOST
National President Grey Power NZ
February 2021

As a pensioner, I am often the first to hear about the digital exclusion of older people. I have heard many stories from my friends and family about how they struggle to use digital technology. This is a real problem, as digital technology is becoming increasingly important in our daily lives. We need to find ways to help older people overcome these challenges.

Arvida has over 30 communities across New Zealand

Find out more on 0800 278 432 or visit arvida.co.nz

Arvida

GreyPower MAGAZINE

A lifestyle quarterly and official publication of Grey Power www.greypower.co.nz ISSUE 47 SEPTEMBER 2021

The Future of NZ Super - SHOULD WE PANIC?



DAVID MARSHALL
Chair, Superannuation and Pension National Advisory Group
September 2021

A personal perspective from the Chair Superannuation and Pension National Advisory Group

Arvida has over 30 communities across New Zealand

Find out more on 0800 278 432 or visit arvida.co.nz

Arvida



Hamilton
greypower
magazine

July 2019

Join us
on a Monday morning
rain or shine for a chat and
cup of tea at
Celebrating Age Centre,
30 Victoria Street, 10.30am

BOOK A SHUTTLE TO
AUCKLAND AIRPORT
OR AUCKLAND CRUISE
TERMINAL

- No parking fees
- No need to risk driving while tired
- Relax while being driven
safely and in comfort

HAMILTON TO AUCKLAND AIRPORT DAILY

Book online at www.luxuryairports shuttles.co.nz OR CALL 0800 454 478

44 HAMILTON
2 PERSON FROM
\$40 one way
return \$150

2 PERSON
\$130 one way
return \$230

Friday 25-Mar-22

WHAKATANE DISTRICT

Grey Power News

ADVOCATING FOR THE OVER 50S

www.whakatanegreypower.com/newsletters

President's Message

We are a small association that aspires to punch above its weight. We advocate on a number of issues which we consider to be of paramount importance to our members and their descendants. For now, we are focusing on health and living costs.

On Friday, 4th March 2022, several committee members travelled to Matamata for the Zone 3 Associations meeting. Zone 3 comprises of 23 Associations ranging from Hamilton to the Coromandel Peninsula and across to Gisborne.

Our main mission for this meeting was to put a remit on the table for Zone endorsement. In the present context a remit is a matter that Grey Power are referring to government for consideration. The remit was entitled 'Halt Privatization of Health'.

To support the remit, I have conducted extensive research on our health system and spoken with many authoritative people. I delivered an address to Zone 3 members providing historical context and background to the government's forthcoming health system reforms. I also provided compelling evidence

that our health system is being privatized by stealth and warned of possible adverse consequences for Grey Powers members and their descendants. The idea was to convince each association to support the remit prior to consideration at the national Grey Power Annual General Meeting in Wellington. The presentation, which was well received, can be found here:

<https://www.whakatanegreypower.com/post/presentation-of-remit-on-health-at-zone-3-meeting>

The final remit wording was as follows:

That Grey Power lobby to halt the ongoing privatization of our Health System without a sound economic business case for each proposed implementation and corresponding solid evidence of improvements to the health outcomes for New Zealanders.

I am glad and proud to inform Grey Power members that the remit was passed unanimously by Zone members and will make its way onto the national AGM in July 2022.

Dr/Prof. Victor Luca, President

Grey Power Snippet

SUBS are due by March 31st.
\$15 per member, \$25 per couple.
Please pay to bank account number 38 9003 0986339 02, giving your name and membership number as reference, or contact the treasurer June Goodhew. Thank you.

Grey Power Electricity is a partnership with Pulse energy to provide financial members with lower electricity prices and better services. As a Grey Power member, you have access to low-cost energy rates. With no long-term contracts, no mark up on network services and also the opportunity to add discounted broadband and natural gas or LPG to your account. It is worthwhile investigating.

There are further discounts on direct debit, and online billing.

Grey power Electricity also gives a to the grey power federation a levy for every member that becomes an electricity customer.

CHEAP ELECTRICITY FOR GREY POWER MEMBERS

So, you win both ways.

All power companies have different prices. Grey Power Electricity is one of the cheapest. To give you an example:

GREY POWER ELECTRICITY

Fixed daily rate: 15 cents per day
Kilowatts used rate: 9.5 cents per kw/h

E----- K-W-

Fixed daily rate: 35 cents per day
Kilowatts used rate: 27 cents per kw/h

The discount is only available to financial Grey Power members and will be cancelled if you resign from Grey Power. You must register to join. Pulse energy will contact your current supplier and organise the transfer of your account which will take between 5 – 10 working days. You will then pay your bill directly to Grey Power Electricity.

If you are interested contact Grey Power Electricity on 0800 473 976 for further information.

Whakatane Grey Power MEMBER PROFILE

ARTHUR & VALERIE CAMPBELL



Arthur and Valerie have been with Whakatane Grey Power for 4 years now. They joined Grey Power for they liked that the organization was lobbying Government on various issues. They have been regular attendees to the Grey Power general meetings and enjoy the social functions

Valerie hails from Oamaru and met Arthur when she was working in Dunedin where Arthur worked as a carpenter/ builder. They have been married for nearly 60 years. While Arthur worked during the day, Valerie looked after their 4 boys & the home. Then Arthur

would look after the children while Valerie worked the Twilight hours at a wool factory. It was an arrangement that worked well.

After a visit to Whakatane 48 years ago, Arthur decided that this was the place for them to raise their family. Since retirement, Arthur and Valerie have kept busy with various activities.

Arthur was part of U3A Theatre group, the Bulletin editor for the original Lions Club (which has now been closed), walking and pottering about the garden. Valerie also enjoys walking, playing badminton, exercising at Sunny Gym and Tai Chi. You can catch Valerie at the Rose Gardens on Thursday morning teaching Tai Chi, the graceful art of exercise. What a great way to de-stress and it's free.

Say hello the next time you meet Valerie and Arthur at our meetings and functions.

For your Diary

Upcoming meetings:

Next general meeting at Knox Church, April 20th 10 am.

A.G.M. at Knox Church, May 18th at 10am.

ALL MEETINGS SUBJECT TO COVID RESTRICTIONS

Whakatane Grey Power - Contact

INTEREST | ENQUIRIES | MEMBERSHIP

Dr Victor Luca
President
027 749 8888
Dr Siva Panadam
Vice President/Membership
027 280 7122

Gaye Murphy
Secretary
027 441 8666
June Goodhew
Treasurer
027 231 3683

Contributions welcomed!

New Website



Browser tabs: (2) The great deb X (2) The great deb X Modern radiothe X Economist Micha X The TomoTherap X Lenovo 15.6" FHC X Wix Home | Wix.com X Wix Wix Website Edit X Home | Whakatā X

Address bar: https://www.whakatanegreypower.com 90% ☆

Navigation: Home About Blog Events Newsletters Resources Contact

Whakatāne District Grey Power Association Inc.

Take Action!

About us
Who are we and what do we do?

Upcoming events
To find out about upcoming events, click here

Newsletters
Current and past newsletters can be viewed and downloaded

Get involved
I'm a title. Click here to add your own text and edit it

Let's Chat!

Windows taskbar: Type here to search 9°C 7:52 AM 5/11/2022

General Meetings



2021-2022 Meeting Calendar

19-May-21: Whakatāne District Grey Power Association AGM

20-Oct-21: Bevan Gray – 3-Waters Reforms

17-Nov-21: Nigel Clark – Solid Waste

16-Feb-22: Ian Finch – Health Reforms

21-Mar-20: PM announces alert level system.

23-Mar-20: Prime Minister announced country would, effective immediately (1.40pm) enter alert level 3, and that after Wednesday the country would go into alert level 4 for at a minimum 4 weeks

23-June-21: Wellington region moves to Alert Level 2 after Australian traveler returns to Sydney as a positive case.

17-Aug-21: Community case in Auckland is identified. The case is believed to have been infectious since the 12th August and visited several location in Coromandel town. **An alert level four lockdown for all of the Auckland region is subsequently announced**, to commence from midnight.

The vaccination roll-out is paused for two days. This case signals the beginning of a Delta outbreak in New Zealand.

31-Aug-21: The Delta outbreak continues, with all new cases reported in Auckland. Subsequently, all of New Zealand excepting Auckland and Northland move to alert level three.

21-Sep-21: Auckland moves from alert level 4 to 3.

2-Sep-21: Record number of first dose of vaccinations delivered (65,202 doses). Northland changes to alert level three (Auckland remains in four).

21-Sep-21: Auckland alert levels shifts from four to three, until 5th October at least. All other regions stay at level two (excepting the Hauraki local restrictions).

3-Oct-21 Community cases in Waikato see localised areas within the region move to alert level 3.

9-Nov-21 Auckland moves to alert level 3, step two.

Thank you for your attention

Hasta la vista
Arrivederci
Hare Ra

